


# HARMON ELECTRIC

A Touchstone Energy® Cooperative 

www.harmonelectric.com

# Hi-Lites

March 2005

Serving Southwest Oklahoma and North Texas

Supplement to Oklahoma Living

## Coops Make Decisions for Long Term

There have been appalling stories in the media over the past two years about short-term decisions made by greedy people with little consideration for the integrity or longevity of their companies.

In contrast, cooperatives make decisions for the next generation and the generation beyond that, not the next quarter. We have been serving members for more than 65 years, and we intend to continue serving members well into the future. Our parents and grandparents were anything but

shortsighted when they struggled against strong odds to create local cooperatives.

The cooperative business model is as strong or stronger today than ever. We are locally owned and locally operated. We have worked for your trust, and, hopefully, we have earned it.

If you have any questions or complaints, please call your local co-op office. Or drop by. Walk right in as if you own the place, because you do.

## MARK YOUR CALENDARS!

HARMON ELECTRIC ASSOCIATION WILL

HOLD IT'S 67TH ANNUAL MEETING

FRIDAY, APRIL 1ST, 2005

AT THE HOLLIS CIVIC CENTER



### ***In This Issue:***

Coops Make Decisions for Long Term.....	1
Mark Your Calendars .....	2
Make Appliances Sparkle .....	2

Back Up Your Electricity Safely .....	3
Why Should You Go to The Annual Meeting? .....	3
Plant Safely This Season.....	3
Classified Ads .....	4
Recipe of the Month.....	4

# Make Appliances Sparkle as Part of Spring Cleaning

Don't overlook your electric appliances when you're scouring the rest of the house this spring. Try these age-old tricks for making your appliances sparkle like new:

- Wax large appliances with car wax to make them shine and to remove small scratches.

- Stop your white appliances from yellowing by cleaning them with a mixture of one-half cup bleach, one-quarter cup baking soda and four cups warm water. Apply with a sponge and let set for 10 minutes. Rinse and dry thoroughly

- Place a few drops of vanilla extract on a piece of cotton and place it in the refrigerator to eliminate odors. Another odor-eater for the refrigerator: charcoal briquettes.

- Wipe the refrigerator down with vinegar to prevent mildew.

- Vacuum the front of the refrigerator's coils and motor to remove dust and dirt.

- Before you store your humidifier for the winter, clean it properly— according to the manufacturer's instructions. If you put it away without cleaning it, it can harbor dangerous molds for next winter.



- Clear the top of the refrigerator and microwave oven of clutter that can make them operate less efficiently. A good way to keep the clutter at bay: Place a decorative item on top of the appliance.

- Flush a half cup of white vinegar down the garbage disposal and follow it with a half cup of baking soda. The mixture will remove odors.

- Set a bowl of vinegar in the oven and another in the microwave to clear odors.

- To safely clean coffee carafes, dump a teaspoon of baking soda in the pot and pour boiling water over it.

- Fill your blender container with warm water, add a few drops of liquid detergent and blend for 30 seconds. Rinse well.

131802

**HARMON ELECTRIC ASSOCIATION**  
Incorporated  
114 North First Hollis, OK 73550

*Operating in*

Beckham, Harmon, Jackson, Kiowa  
and Greer Counties, Oklahoma

Hardeman and Childress Counties, Texas

*Member of*

Western Farmers Electric Cooperative

Oklahoma Association of Electric Cooperatives

National Rural Electric Cooperative Association

National Rural Telecommunications Cooperative

Texas Electric Cooperative, Inc.

Oklahoma Rural Water Association, Inc.

www.harmonelectric.com

**HARMON ELECTRIC HI-LITES**  
*Charles Paxton, Editor*

The Harmon Electric Hi-Lites is the publication of your local owned and operated rural electric cooperative, organized and incorporated under the laws of Oklahoma to serve you with low-cost electric power.

Dwight Bowen .....Manager

**BOARD OF TRUSTEES**

Pete Lassiter .....District 1  
J.B. McAlexander .....District 2  
Clinton Nesmith .....District 3  
Bob Allen .....District 4  
Burk Bullington .....District 5  
Jean Pence .....District 6  
Billy R. Nowell .....District 7  
Charles Horton .....Attorney

Monthly Board of Directors meetings  
Held Fourth Thursday of Each Month

**IF YOUR ELECTRICITY GOES OFF  
REPORT THE OUTAGE**

We have a 24-hour answering service to take outage reports and dispatch servicemen. Any time you have an outage to report in the Hollis or Gould exchange area, call our office at 688-3342. Any other exchange area call toll free, 1-800-643-7769.

**TO REPORT AN OUTAGE  
CALL 688-3342 or 1-800-643-7769  
ANYTIME**



# BACK UP YOUR ELECTRICITY SAFELY

Blackouts, rolling brownouts and fierce weather have led more people to buy generators in case the electricity goes out for an extended time.

But the dangers of home generators can far outweigh the benefits if they're not installed and used properly

## **Safety guidelines:**

- Hire a licensed electrical contractor to install your generator. If you connect the generator directly to your home's wiring, it can "backfeed" into your electric cooperative's utility lines and electrocute lineworkers who think they're working on a "dead" power line. A contractor will know that a generator needs a transfer switch, which makes sure that doesn't happen.

- Likewise, plugging a portable electric generator into a regular household outlet can also backfeed electricity, which can harm or even kill utility crew members or your neighbors.

- Plug appliances directly into the generator, using heavy-duty, outdoor-rated extension cords.
- Check the output rating of the generator. It will tell you how many appliances it can operate at once. Overloading the generator can damage your appliances and expensive electronic equipment. Use generators only during emergencies, and plug in only necessary appliances.

- Place your generator outdoors in a dry, protected area where its deadly exhaust fumes cannot enter the house.

- Properly ground your generator to protect from electrical shocks.
- Turn off all appliances and equipment powered by the generator before turning the generator off
- Don't touch the generator while it's running; it can get hot enough to burn you. And keep children away from the generator - even when it's turned off

## Why Should You Go to the Annual Meeting?

That's a fair question. Now let us tell you why you, and every member of Harmon Electric Association, Inc., should attend annual meetings.

First, you should realize, if you don't already, that this is your Electric Cooperative - your own private business enterprise. You're a part owner. That means that you are entitled to have your say-so in its operation, just as much as you have in the operation of your own farm or any other business you own.

As a matter of fact, your voice in the running of this system is more than a right - it's actually an obligation on your part. If Harmon Electric is to be run intelligently and efficiently, its policies must be the result of the thinking and wishes of all its members. And those wishes are expressed by the way you and your neighbors vote at the annual meeting.

The annual meeting is your opportunity to check up on how your system is operating, get the facts on its financial status, and learn what problems it may have to face in the coming year. The annual meeting is also your opportunity to vote on issues and proposals that will directly affect you and all the other members of Harmon Electric.

The welfare of Harmon Electric and its ability to continue providing the best service at the lowest possible cost depend on whether you take advantage of your opportunities and fulfill your obligations at the annual meeting.

## Plant Safely This Season

You can improve air quality, add beauty and increase your property value by planting a few trees around your home. You could even see a dip in your summertime cooling bills if you plant shade trees in strategic locations around the house.

But plant wisely. Tree branches can conduct electricity, creating a possible shock hazard for utility workers who need to service overhead power lines that are too close to towering trees.

Before you plant, investigate how tall the tree will grow and how wide its branches will spread. A tree that grows too tall or stands too close to a utility line may need extreme pruning that will ruin its lush look. To avoid this, don't plant anything that will grow to within 10 feet of a utility pole or overhead wires.

### **And for your own protection:**

- Never use ladders or tools near power lines or near trees that are close to lines
- Leave the pruning of trees that are near overhead wires to professionals. It's too risky to prune them yourself.
- Call your electric cooperative or 1-800-522-okie in Oklahoma or 1-800-DIG-TEXS before you dig a hole to plant a tree - just to make sure you won't interfere with underground power lines on your property. It's not only a safe practice; it's the law.

**FOR  
SALE**

## CLASSIFIED ADS

**Whirlpool Super Capacity white Electric Stove and Oven**, Acubake System, Cermic Top, Self-cleaning range, \$300, call 580-688-2370 after 6 p.m.

**House for Sale in Duke:** Large corner lots - 3 BR - 1 3/4 bath - large utility room - wood burning stove in living room - 2 blocks from school. Price \$39,500, call (580) 679-3938 or cell (580) 679-4787.

**10 General LMT 460, 225/70R19.5 Tires** with less than 10,000 miles, \$150 each, call Gary at HEA, (580) 688-3342 or call (800) 643-7769 or e-mail at [grippetoe@harmonelectric.com](mailto:grippetoe@harmonelectric.com).

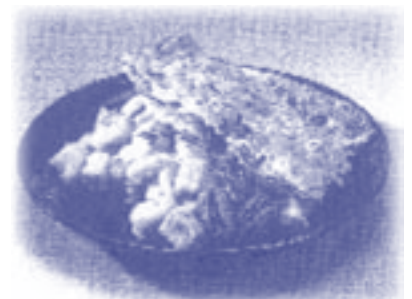
**House For Sale:** Large corner lot, with 4 bedrooms, 2 3/4 bath, den, living room, large country kitchen, very comfortable, must see to appreciate, 301 E Chestnut, Hollis, call (580) 688-2913.

*Classified ad space is offered free to Harmon Electric Association Members. Send your ad to Harmon Electric Association, P.O. Box 393, Hollis, OK 73550 for next month's issue. Ads will be run one month only and must be re-submitted if you still wish the ad to be run. Service ads will be run three months before they must be resubmitted.*

## Ham & Sweet Potato Pot Pie

## Recipe of the Month

1 cup chopped onion	1 cup skim milk
2 cups cubed sweet potatoes or 2 (15-ounce) cans sweet potatoes, drained and cubed*	2 cups cubed cooked ham
2 cups canned chicken broth, divided	1 9-inch refrigerated pie crust
1/2 cup all purpose flour	1/2 cup finely chopped pecans
	1 tablespoon thyme



*Preheat oven to 350 degrees. In large pot coated with nonstick cooking spray, sauté the onion over a medium-high heat for 5 minutes. Add fresh\* sweet potatoes and 2/3 cup chicken broth. Bring mixture to a boil and simmer over medium heat for 10 to 15 minutes or until sweet potatoes are tender. If using canned yams, add them and 2/3 cup chicken broth to sautéed onion, heat thoroughly. Add flour stirring. Gradually add milk, stirring until well combined. Add ham. Bring to a boil and transfer mixture to a 7x11 inch baking dish coated with nonstick cooking spray. If mixture is too thick, add more broth or milk. Unfold crust to round circle; sprinkle pecans on one side. Fold in half and roll with rolling pin, pressing pecans into crust. Spread pecan crust on top of mixture and bake for 30 minutes or until crust is brown; sprinkle with thyme. Serves 4-6. \*Canned sweet potatoes are precooked.*

## HIDDEN ACCOUNT NUMBER WORTH \$10.00

Mr. Talmadge Davidson did locate his hidden account number 105900 which was located in the "Ten Ways to Save on Heating Bills" section on the second page of the February 2005 issue of the "Harmon Hi-Lites." The hidden map location for March 2005 is worth \$10.00.

Remember the contest rules as you search your "Harmon Hi-Lites."

1. The hidden account number must be your own. Find the account number somewhere in the newsletter and

compare the number listed in the lower left corner of your power bill, if same it is your number.

2. Your number must be reported by the 12th of the same month of publication of the newsletter.

3. You must report your own number to the association's headquarters office in Hollis, Oklahoma by phone, mail or in person.

4. Money will accumulate at the rate of \$10.00 per month until the number is found or until January 1, 2006.